

WESTERN WAKE PARTNERS

Report to the Policy Advisory Committee (PAC08-24)

Date: March 12, 2008
To: Western Wake Partners
From: Stephen J. Brown, P.E., Director of Public Works and Utilities,
Town of Cary
Prepared by: Stephen J. Brown, P.E., Director of Public Works and Utilities,
Town of Cary
Subject: Consideration of Support for Progress Energy Carolinas, Inc.
Application for a Certificate of Environmental Compatibility and Public
Convenience and Necessity to Construct Approximately 15 Miles of
New 230-kV Transmission Line in Wake County

Background

Progress Energy Carolinas, Inc. has submitted an application to the North Carolina Utilities Commission (NCUC) for a Certificate of Environmental Compatibility and Public Convenience and Necessity to Construct Approximately 15 Miles of New 230-kV Transmission Line in Wake County. The application is identified by the NCUC as Docket No. E-2, Sub 914. A public hearing on this application is scheduled to be held by the NCUS on Tuesday, April 22 and Wednesday, April 23, 2008. Staff recommends that the Western Wake Partners express support for approval of the application. There are two main reasons for this recommendation:

1. The reliability of our electric energy supply is of vital importance to the safety and welfare of our citizens. The improvements proposed by Progress Energy will serve to improve that reliability.
2. The Western Wake Partners have proposed wastewater pipeline projects whose planned routes significantly align with the Progress Energy transmission route. See the attached Figure 1. Through cooperation with Progress Energy we believe that the combined environmental impact of both projects can be minimized for both the construction phases and for long-term maintenance. Combined impacts include sharing stream crossings, utilizing common utility corridor values that minimize tree cutting and addressing danger tree requirements.

A draft letter of support is attached as Figure 2. Figure 1 is intended to accompany this letter.

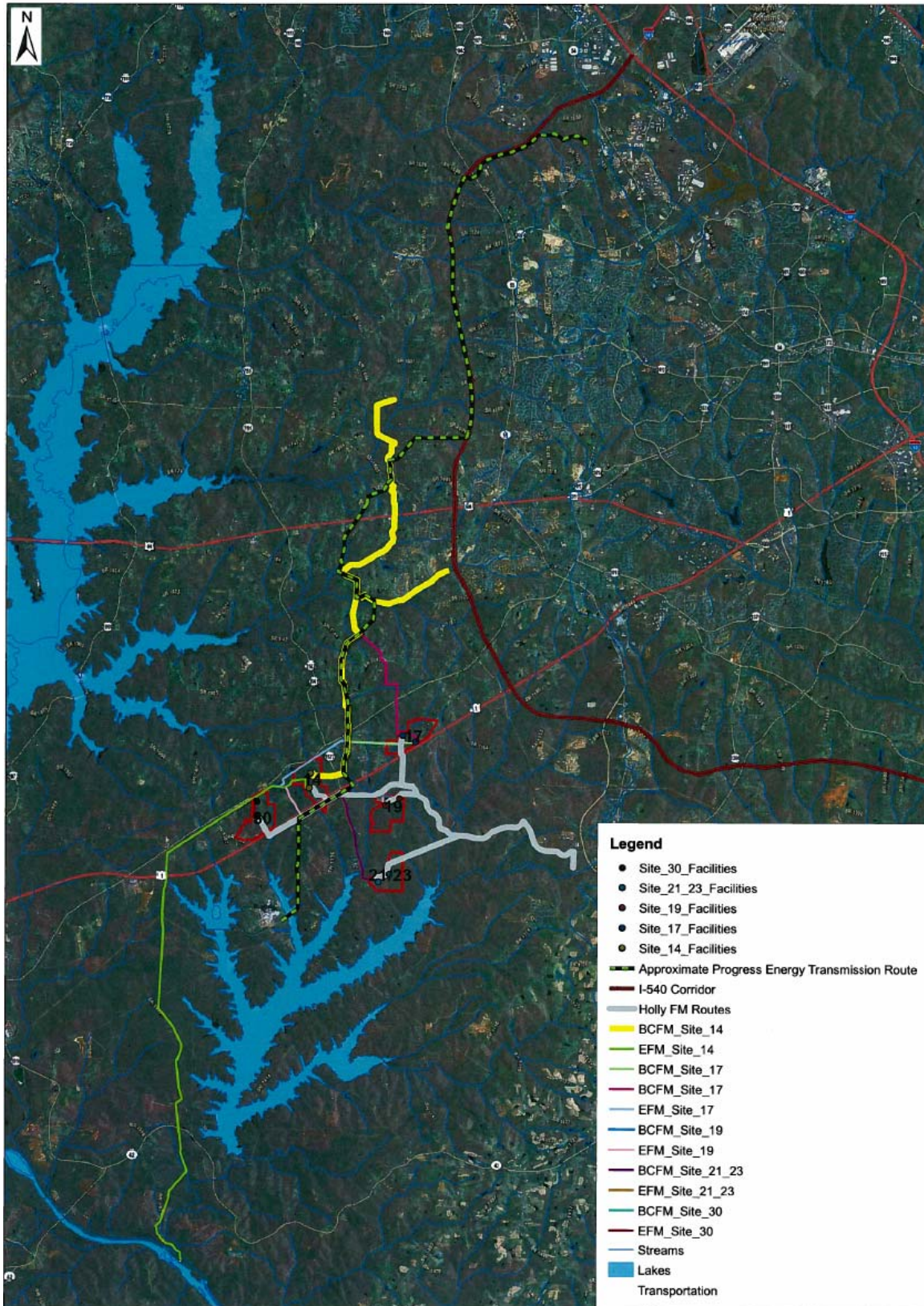
Fiscal Impacts

There are no direct fiscal impacts of this recommended action. Staff and the pipeline designers are already working with Progress Energy to maximize co-location of facilities.

Requested Action:

Staff recommends that the Policy Advisory Committee express support for Progress Energy's application to the North Carolina Utilities Commission (NCUC) for a Certificate of Environmental Compatibility and Public Convenience and Necessity to Construct Approximately 15 Miles of New 230-kV Transmission Line in Wake County by sending the attached letter to the North Carolina Utilities Commission prior to the April 11, 2008 deadline for public comment.

Figure 1



Proposed Influent & Effluent Pipe Routes and
Approximate Progress Energy Transmission Route
WESTERN WAKE REGIONAL WASTEWATER MANAGEMENT FACILITIES

April 11, 2008

North Carolina Utilities Commission
4325 Mail Service Center
Raleigh, NC 27699-4325

RE: Progress Energy Carolinas, Inc. Application for a Certificate of Environmental Compatibility and Public Convenience and Necessity to Construct Approximately 15 Miles of New 230-kV Transmission Line in Wake County.
Docket No. E-2, Sub 914

Dear Sir:

A public hearing on the above referenced application is scheduled on Tuesday April 22 and Wednesday April 23, 2008. This letter is to express our communities' strong support for approval of the application.

The reliability of our electric energy supply is of vital importance to the safety and welfare of our citizens. The improvements proposed by Progress Energy will serve to improve that reliability. We have examined the application and associated environmental assessment and find no reason to recommend alternative routes or design.

In addition, the Western Wake Partners have proposed wastewater pipeline projects whose planned routes significantly align with the Progress Energy transmission route (see attachment). Through cooperation with Progress Energy we believe that the combined environmental impact of both projects can be minimized for both the construction phases and for long-term maintenance. Combined impacts could include sharing stream crossings, utilizing common utility corridor values that minimize tree cutting and addressing danger tree requirements.

On behalf of the Western Wake Partners, thank you for the opportunity to express our support for this application. Please contact me if you need further information regarding that support or our proposed wastewater infrastructure improvements.

Best Regards,

Keith H. Weatherly
Mayor
Town of Apex
Western Wake Partners
Policy Advisory Committee Chairman